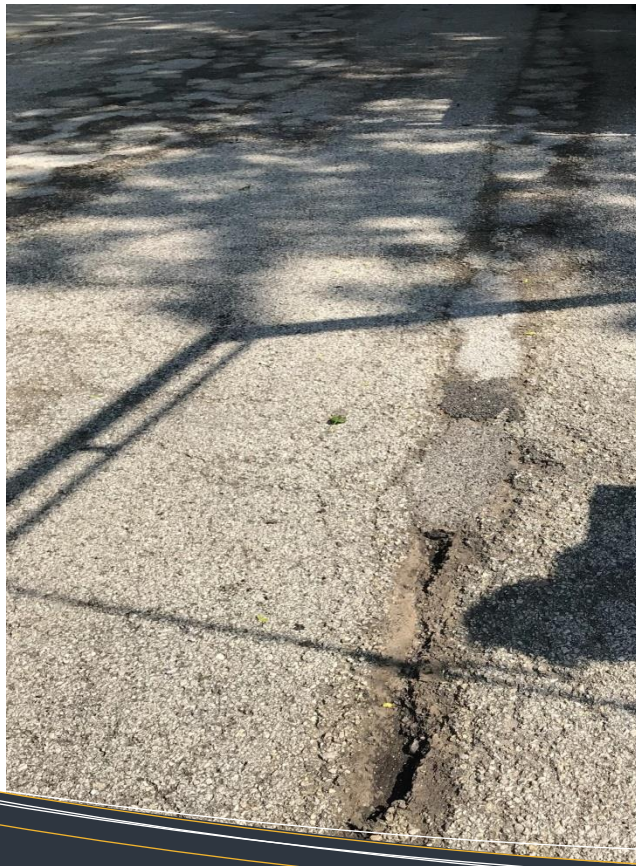




professional and cost-effective manner. This innovative and effective service to our residents is designed to preserve and improve the integrity of the street and to help aid in the continued effort to provide safe travel for residents.



deficient roadway

If you have any questions or concerns related to the Village's Total Patching Program and its effect on your neighborhood, please feel free to contact the Village of Buffalo Grove's Street Section:

**VILLAGE OF BUFFALO GROVE**  
Public Works Department

- Phone: 847-459-2545
- Email: [BGPubWks@vbg.org](mailto:BGPubWks@vbg.org)



51 Raupp Boulevard  
Buffalo Grove, IL 60089  
847.459.2545 ph  
847.537.1742 fax  
[BGPubWks@vbg.org](mailto:BGPubWks@vbg.org)  
[www.vbg.org/EAB](http://www.vbg.org/EAB)

**Total Patching Program**

Responding to an immediate need  
in your neighborhood

# Due to the condition, your street has been selected to be patched through the Total Patching Program.

## IMMEDIATE ACTION IS REQUIRED

The condition requires the use of the Total Patcher machine and will improve street durability



## FREQUENTLY ASKED QUESTIONS



**Why is this type of work being done, rather than full street resurfacing and/or replacement?**

Unfortunately, street improvement funding has been unable to sustain a budget number consistent with the Village's need for street replacement / resurfacing. Due to the funding shortage, the replacement / resurfacing program has fallen behind and more streets are in need of greater repair. The Total Patcher allows for a sustainable surface life extension that will hold up against the harsh winter weather conditions seen in our area. The current method used across the industry (filling holes with a mix that can come right out) was not providing a lasting product and became costly. Therefore, The Village pursued a superior application that could provide a cost effective and durable repair.

**When will the Village be coming back to perform a full resurfacing or replacement of the street?**

Given the unstable economic climate of Illinois and the lack of street funding in the Village, a firm timetable is unknown. The Village will continue to track this street against all others of a high need to determine the best application given the circumstance.

**What should I do if I get some tar on my vehicle?**

Any tar that gets on a vehicle can be removed by lightly applying a basic tar remover.

**What should I do if some of the chip stone tracks into my driveway apron?**

Any loose chip stone can be swept (or blown) back into the street. A street sweeper will collect loose chip stone from the street after the patching material has fully cured and hardened 72 hours after the application.



**More FAQ's can be found at:**  
[www.vbg.org](http://www.vbg.org)

**Due to budget constraints, many of the streets that would usually be included in the replacement/resurfacing program are not able to be included at this time. The Public Works Department has begun addressing the deficiencies of these streets by using The Total Patcher. It is a cost saving and effective method of street patching that is far superior to throwing temporary mix into holes. For more information on the Total Patcher, please visit the Village of Buffalo Grove's website at: <https://www.vbg.org>**

## What is the Total Patcher?



### FUNCTION

The Total Patcher is a trailer mounted machine that uses a mixture of heated tar and fine stone to fill deficiencies and holes in the street. The mixture creates a lasting repair that can remain in tact even during the severe winter weather conditions.

### PROCESS

The process begins by identifying areas in streets that are considered deficient. Deficient areas are areas that contain heavy cracking, holes, and extreme deterioration. Once an area has been identified, the machine uses a powerful air pressure system to blow debris

### PROCESS (cont.)

from the area. A layer of bonding tar is then placed at the base of the deficient area and covered by a mixture of fine stone and tar. A final layer of stone is placed on top to ensure the product tracks less and has a lasting bond. The mixture in the deficient area can be driven on shortly after application as long as caution is exercised.

After 72 hours of cure time, the product has strengthened and a street sweeper returns to the area to clean up any debris that wasn't required in the bonding process.

## WE'RE HERE TO HELP

- INCREASE STREET DURABILITY
- LENGTHEN STREET LIFE
- PATCH EFFICIENTLY

*IT IS OUR GOAL TO ADDRESS STREETS WITH DEFICIENCIES IN A COST EFFECTIVE AND EFFICIENT MANNER.*



## STREET PATCHING PERFORMANCE EXPECTATION

Once a street has been identified as needing immediate attention, resident notification will occur. The Village will also be marking streets with white lines to communicate to the residents the areas that are expected to be patched. A crew is then assigned to the area and will begin patching the street. After the product has been applied, a 72 hour cure time must be adhered to. This insures the product will remain in tact after application. Several days after product application, a street sweeper will be sent out to clean up any loose chip stone or debris.

**Step 1: Street Identified As Needing Immediate Attention**

**Step 2: Streets Marked for Application.**

**Step 3: Application Of Patching Product.**

**Step 4: After Several Days, Loose Debris Swept From Roadway**